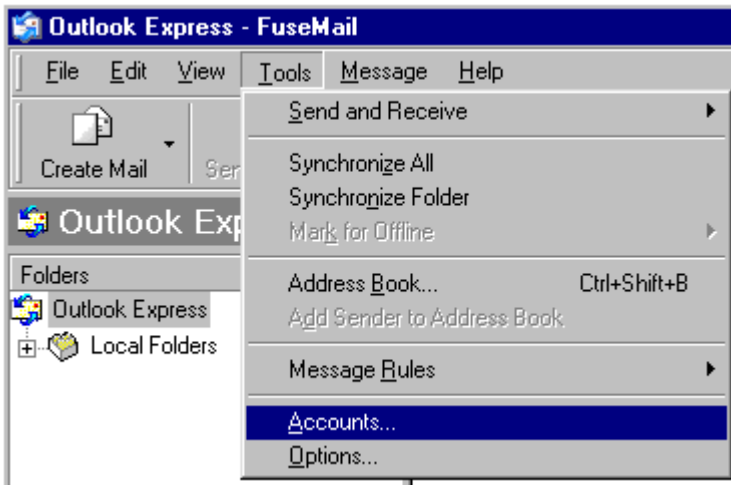


Outlook Express Setup

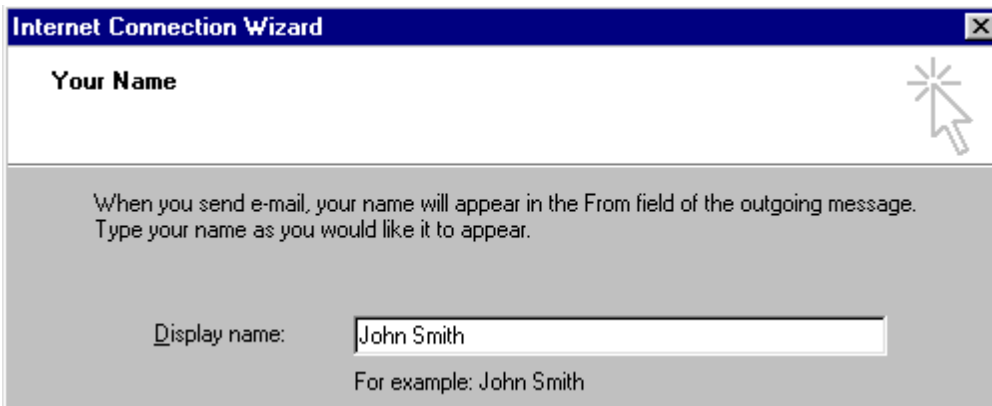
Open Outlook Express and Select Tools -> Accounts.



Select Add -> Mail.



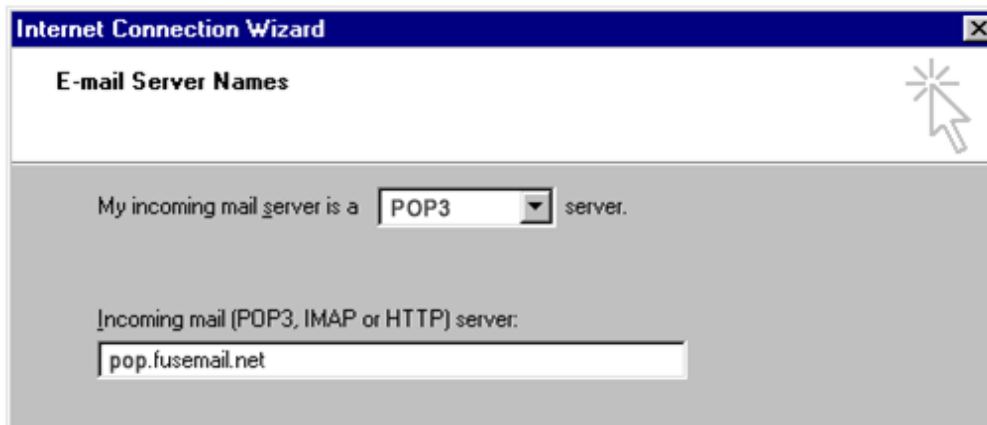
Type your name as you wish it to appear on outgoing messages and then click Next.



Type your email address and then click Next.



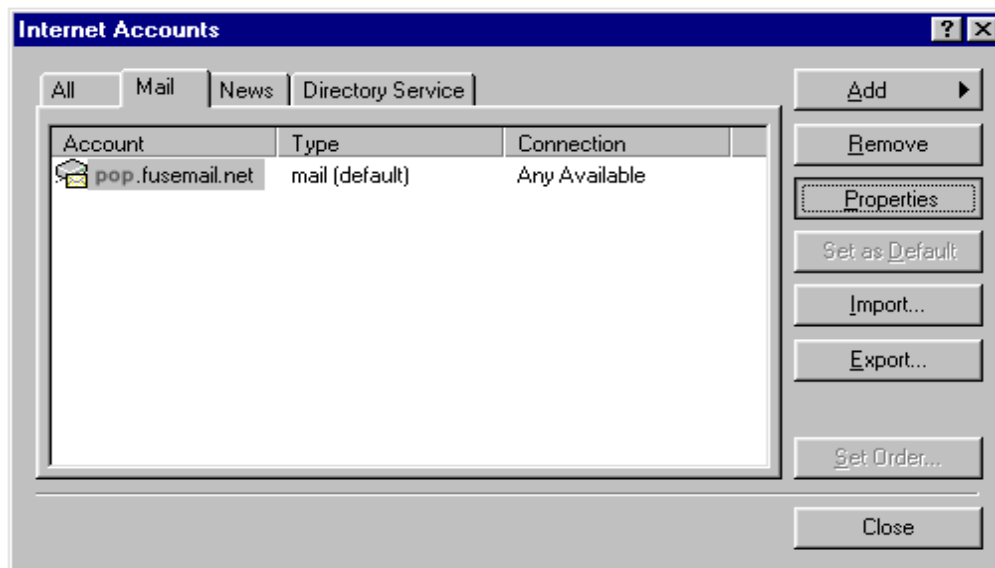
Enter server information.
My incoming mail server is a POP3 server.
Incoming mail server: pop.fusemail.net
Outgoing mail server: smtp.fusemail.net
Click Next.



Enter your username where you are prompted to enter your account name.
Enter your password below where you entered your username.
Be sure to leave "Log on using Secure Password authentication" unchecked.
Click finish.

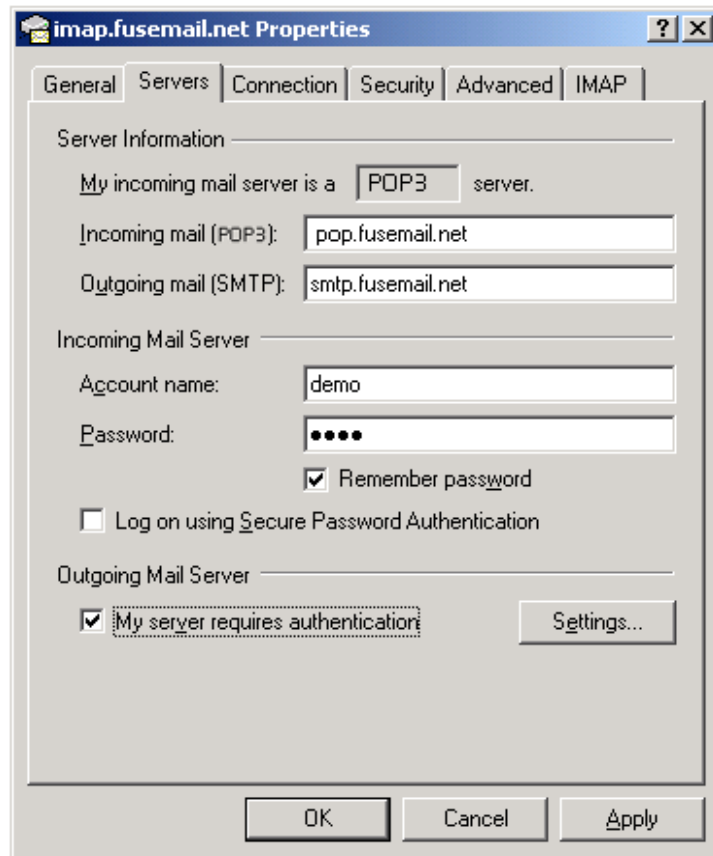


You will be returned to the Mail Accounts window. Select your FuseMail account and then click on the properties button.



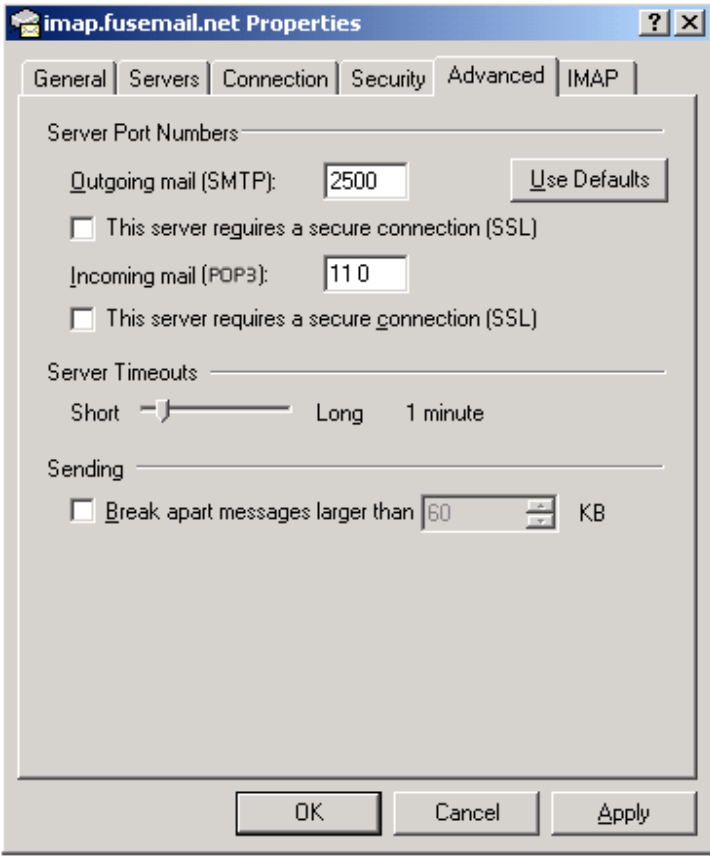
Click in the Servers Tab.

Check my server requires authentication.



Click on the Advanced tab.

Change outgoing mail (SMTP) to 2500



Your account is now setup. Click OK to continue, and then close the Internet Accounts page.